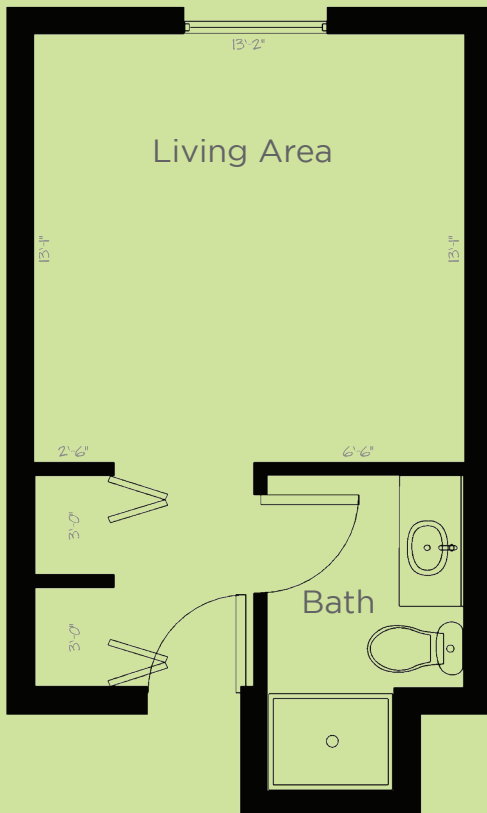


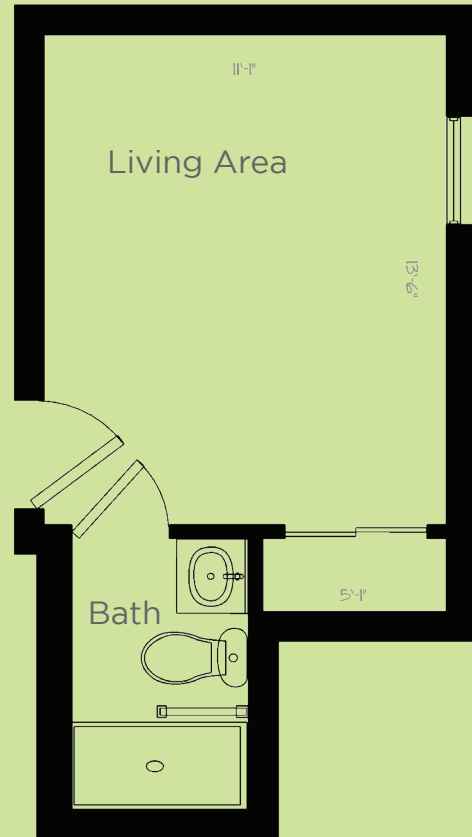
# Floor Plans

Call Now

STUDIO  
269 sq. ft



STUDIO  
200 sq. ft



*Dimensions are approximate. Floor plans may vary.  
Scale: 1' = 1/4"*



**Angels Senior Living at Palma Ceia**  
3720 W. Bay to Bay Blvd, FL 33629  
(813) 831-1914

Assisted Living Facility License #9298  
[AngelsSeniorLiving.com](http://AngelsSeniorLiving.com)

Angels Senior Living is a care network dedicated to enriching the lives of seniors.