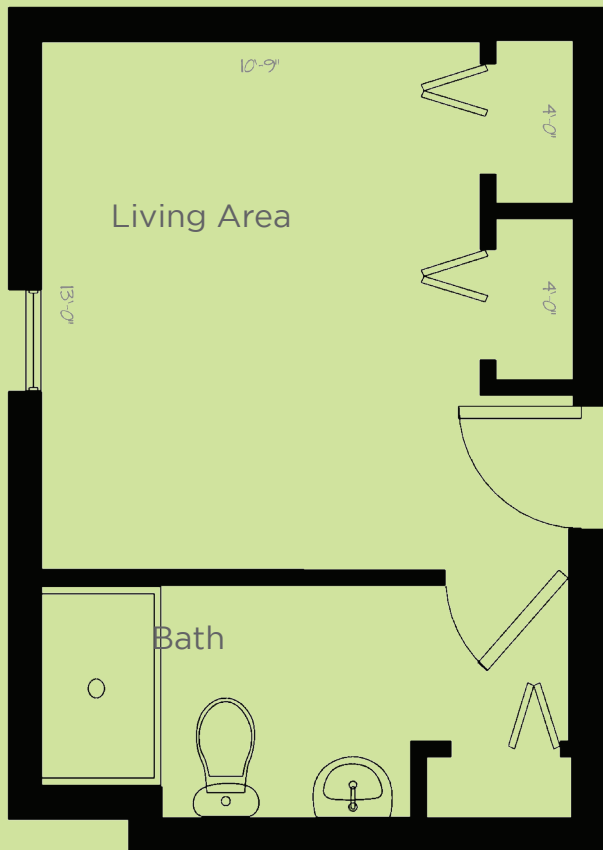


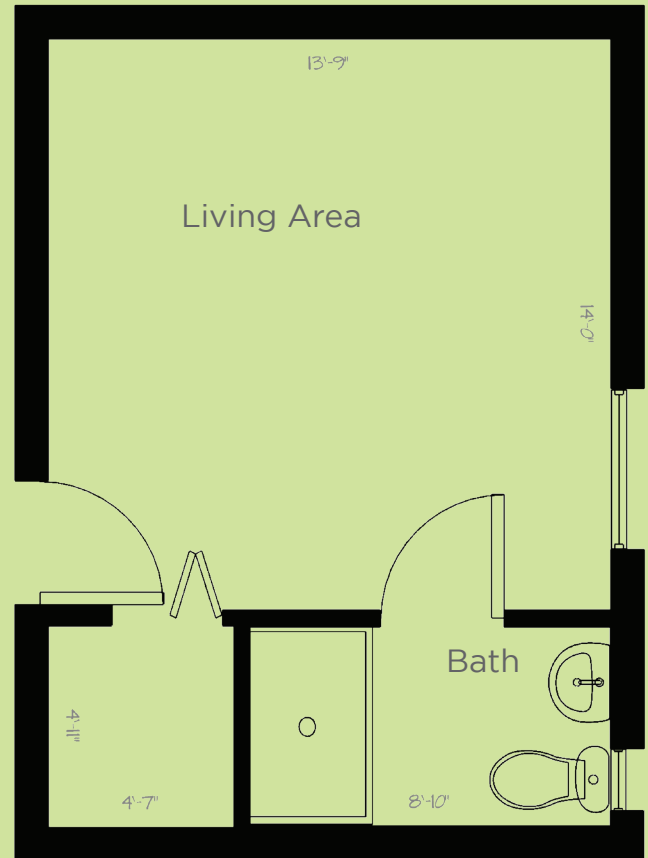
# Floor Plans

Call Now

STUDIO  
200 sq.ft



STUDIO  
203 sq.ft



*Dimensions are approximate. Floor plans may vary.  
Scale: 1' = 1/4"*



**Angels Senior Living at New Port Richey**  
6716 Congress St, New Port Richey, FL 34653  
(727) 203-3776

Assisted Living Facility License #12688  
[AngelsSeniorLiving.com](http://AngelsSeniorLiving.com)

Angels Senior Living is a care network dedicated to enriching the lives of seniors.