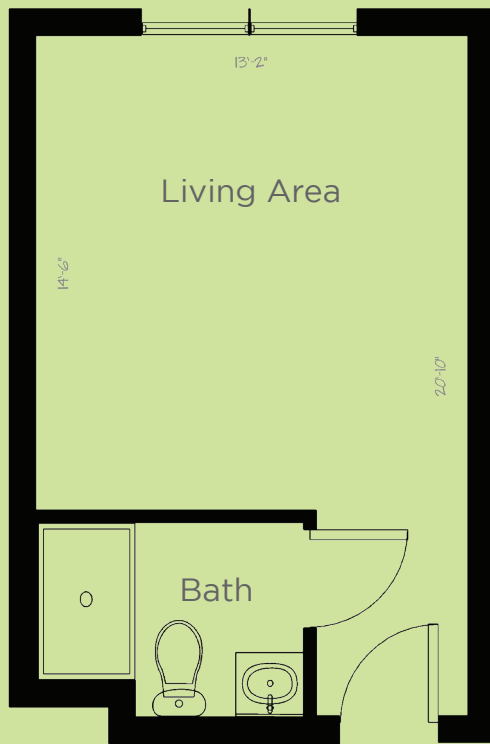


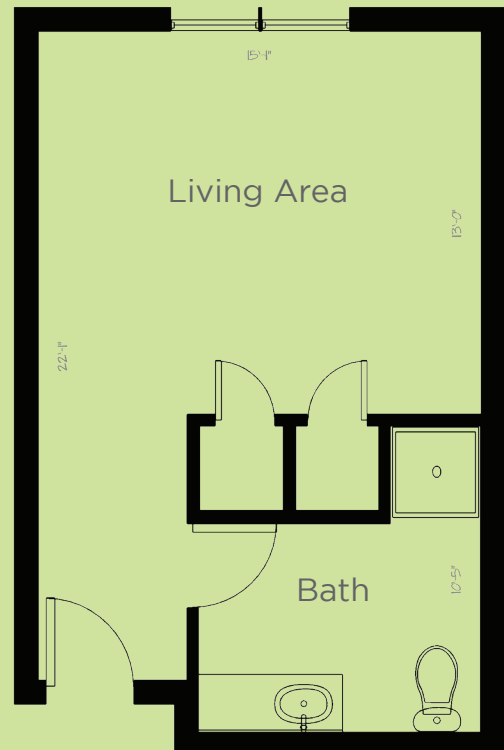
Floor Plans

Call Now

STUDIO
301 sq.ft



STUDIO
346 sq.ft



*Dimensions are approximate. Floor plans may vary.
Scale: 1' = 1/4"*



Angels Senior Living at South Tampa

3330 S. MacDill Ave, Tampa, FL 33629

(813) 296-6578

Assisted Living Facility License #8438

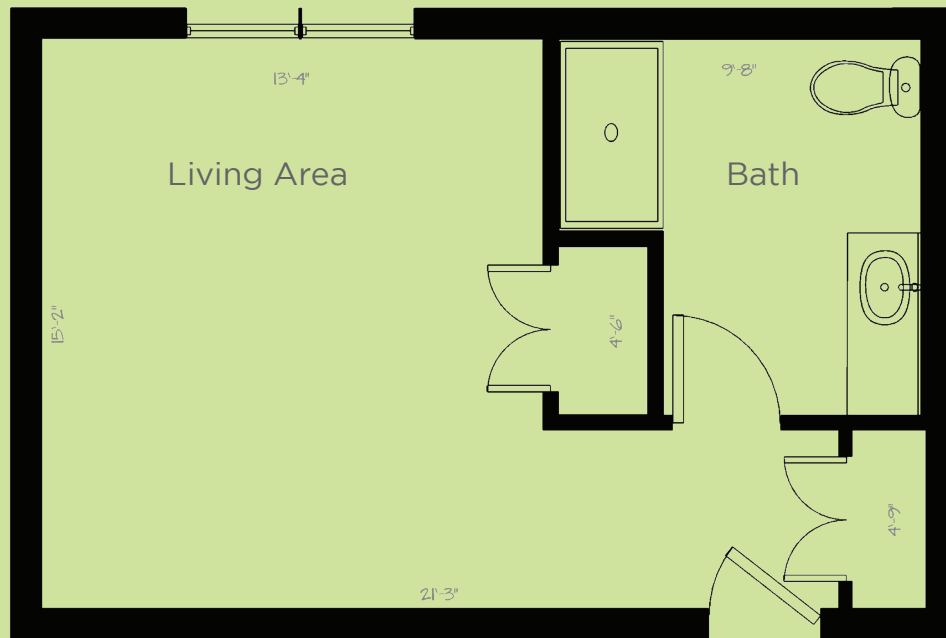
AngelsSeniorLiving.com

Angels Senior Living is a care network dedicated to enriching the lives of seniors.

Floor Plans

Call Now

STUDIO 531 sq.ft



*Dimensions are approximate. Floor plans may vary.
Scale: 1' = 1/4"*



Angels Senior Living at South Tampa
3330 S. MacDill Ave, Tampa, FL 33629
(813) 296-6578

Assisted Living Facility License #8438
AngelsSeniorLiving.com

Angels Senior Living is a care network dedicated to enriching the lives of seniors.